

# ADVICE TO SQUATTERS

## in Respect of Landslips



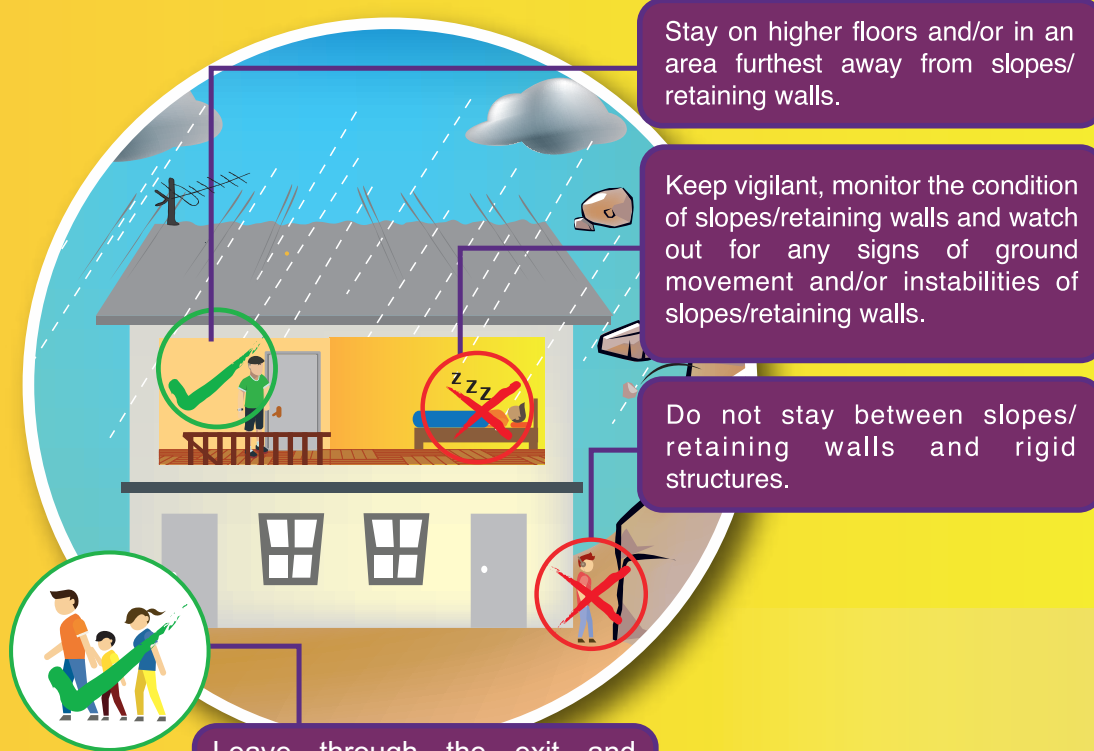
Keep away from slopes/retaining walls when Landslip Warning/Special Landslip Advisory is in force or during heavy rain



## When There is Heavy Rainfall or Landslip Warning / Special Landslip Advisory is In Force



- If the Government notifies you to evacuate, you should follow the instructions to immediately evacuate your squatter to a safe place.
- Suitable temporary shelter(s) will be opened as and when needed at the discretion of District Officer(s) to provide a temporary safe place for people in need.
- When evacuating from your squatter structure, you should leave through the exit and passageway away from slopes/retaining walls.
- Keep staying away from slopes/retaining walls after heavy rainfall as risk of landslide is still high.
- If you need emergency assistance, please call 999 for help.



Stay on higher floors and/or in an area furthest away from slopes/retaining walls.

Keep vigilant, monitor the condition of slopes/retaining walls and watch out for any signs of ground movement and/or instabilities of slopes/retaining walls.

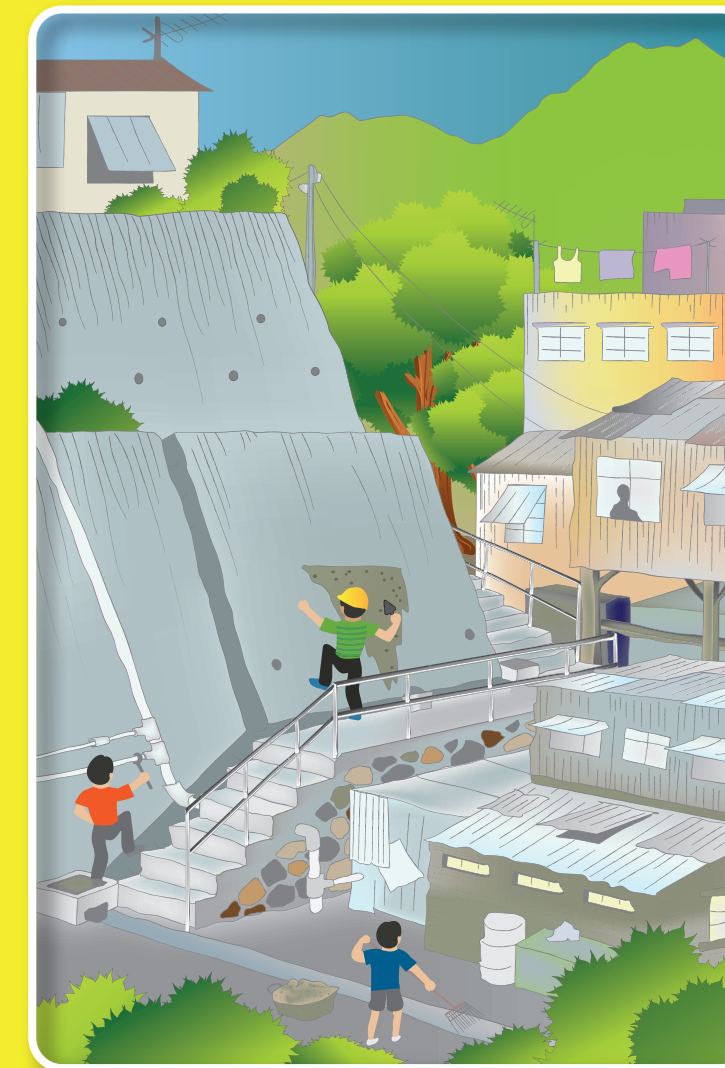
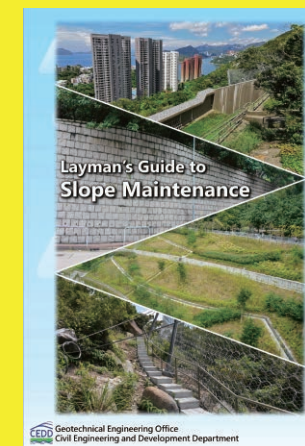
Do not stay between slopes/retaining walls and rigid structures.

Leave through the exit and passageway away from slopes/retaining wall when evacuating from the squatter structure under landslide risks.

- Pay attention to broadcasts from radio or television, or visit the website of Hong Kong Observatory to receive the latest news and warnings.
- You should stay on the higher floors and/or in an area furthest away from slopes/retaining walls.
- If you believe that your squatter structure could be endangered by landslide risks (for example, when signs of landslide such as bulging, cracks or soil washouts appear), you should go to a safe place if condition permits.
- If a landslide occurs, you should stay away from the failure areas and call 999.

## Routine Precautionary Measures

- Rainwater and domestic use water should be collected and discharged into drains. Do not discharge water directly onto the slopes.
- Do not carry out any unauthorized cultivation or site formation on hillside.
- If leaky water-carrying pipe is found, inform the pipe owners to arrange repair works as soon as possible.
- If you are responsible for the maintenance of the slopes/retaining walls or you are the owner of the water-carrying pipes, you should:
  - Keep the slopes/retaining walls in good condition.
  - Clear accumulated debris from drainage channels and slope surface regularly.
  - Repair cracked or damaged drainage channels, cover of slope surface and its crest area.
  - Remove any vegetation causing cracking of slope surface cover and drainage channels.
  - Unblock weepholes.
  - Examine all water-carrying pipes periodically to ensure that they do not leak into the slopes/retaining walls. Repair leaky water-carrying pipes as soon as possible.
  - Refer to the Layman's Guide to Slope Maintenance for details of maintenance of slopes/retaining walls.



Geotechnical Engineering Office  
Civil Engineering and  
Development Department

CEDD Website: [www.cedd.gov.hk](http://www.cedd.gov.hk)  
Hong Kong Slope Safety Website: [hkss.cedd.gov.hk](http://hkss.cedd.gov.hk)  
Contact: [hkss@cedd.gov.hk](mailto:hkss@cedd.gov.hk)  
Enquiry: 1823



Home Affairs Department

For location of temporary shelters,  
please call: 2835 2500 (office hours)  
2572 8427 (activated when Tropical Cyclone Signal  
No. 3 or above, Landslip Warning, Red  
or Black Rainstorm Warning is issued)

HAD Website: [www.had.gov.hk](http://www.had.gov.hk)

Printed by the Government Logistics Department

